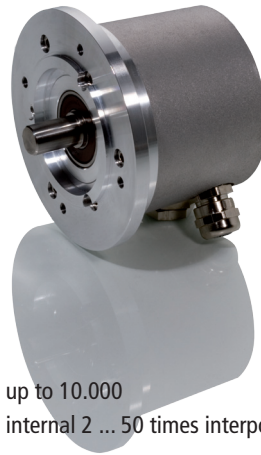


Special encoder AMI 492



Pulses

Each pulse possible
Interpolation

up to 10.000
internal 2 ... 50 times interpolation optional

Mechanical Data

Shaft
Shaft load
Rotating speed
Working temperature
Vibration
Shock
Ingress protection
2014/30/EU EMV-rules

Ø 10 mm, stainless steel
axial 10 N, radial 20 N
max. 10.000 rpm
0° C ... +80° C
10 g (20 ... 2.000 Hz)
100 g (11 ms)
IP 64 on shaft
DIN EN 61000-6-2, DIN EN 61000-6-3

Electrical Data

Signals
Light source
Operating voltage
Current consumption
Output frequency

square wave
LED
5 Volt \pm 5 %, 10 ... 30 Volt, 5 ... 30 Volt
max. 100 mA without load
300 kHz with square wave 5 Volt
300 kHz with square wave 10 ... 30 Volt
1 MHz with interpolation

Output level

5 Volt Line-Driver
10 ... 30 Volt push-pull short-circuit proof

Current output

20 mA

Output signals

2 channels A and B phase-shifted 90° electrically
zero-pulse 1 pulse per revolution
length 90°, 180° or 360° electrically
all signals with inversion

